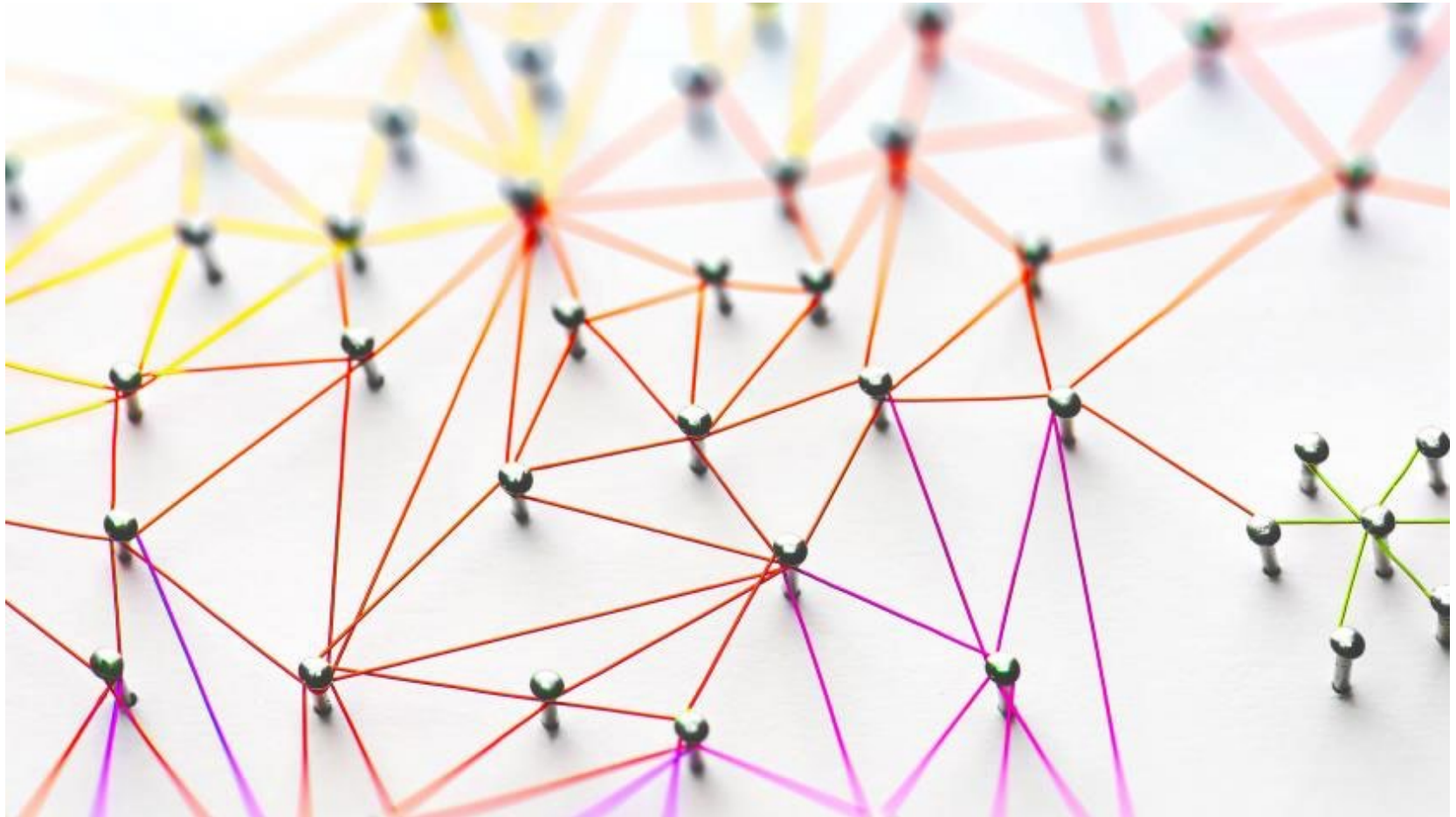


# PLN Network meeting

Cindy Poortman, University of Twente  
Chris Brown, Durham University



# Agenda



1. The year to date
2. New book and your input
3. Networking...

# KEY AREAS OF FOCUS

## Conceptual clarity:

e.g. types of PLN, aims of PLNs, countries and jurisdictions

## Methodology:

Understanding impact and findings;  
effective ways to assess impact  
that go beyond self-report

## Understanding depth and breadth of learning:

e.g., processes of PLN and the wider participating communities

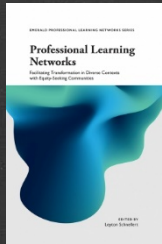


## New insights into:

1. Focus
2. Leadership
3. Collaboration
4. Individual and group learning
5. Reflective Professional Inquiry
6. Boundary Crossing

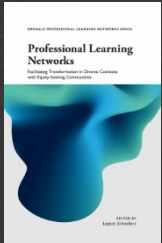
# What has the network achieved over the last year?

- Collaboration with CREN network for Research lab
- Authored book: the networked school leader (Brown)
- Contribution to Valu.Enews newsletter
- PLNs at ICSEI: a big thank you to reviewers!!
- Policy advice to NSW



# What has the network achieved over the last year?

- KMb special issue of JPCC this spring (with Schnellert & Butler; Mason & Galloway; Jesacher-Roessler; Rodway, MacGregor, Daly & Liou; Tulowitzki; MacGregor; and discussant Amanda Datnow) - thank you reviewers!
- Emerald PLN series book edited by Leyton Schnellert (with Washington & O'Connor, McGregor, Halbert & Kaser; Butler & Schnellert; Kim & Martin; Hollweck; Rodway & Farley-Ripple) – thank you reviewers!
- Paper on facilitating RPI in PLNs (Brown, Poortman, Gray & Ophoff)
- See our newsletters highlighting the wonderful and important work of our members!



# Looking ahead...

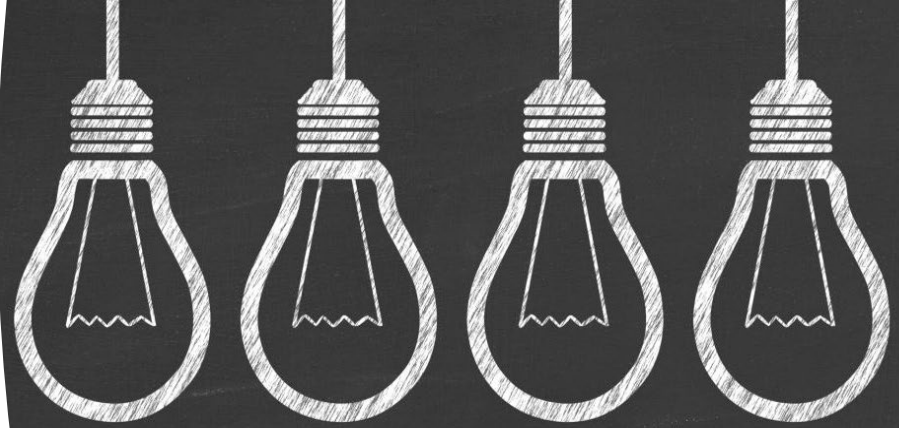
- AERA virtual annual meeting: symposium about the KMb special issue (JPCC)
- More edited books from colleagues in Sierra Leone and New Zealand
- **YOUR NAME HERE? E.g.**
  - (local) conference(s or contributions)
  - Further book series books
  - Collaborative projects, webinars...
  - Input for papers and cases
  - New elements for our key areas of focus?



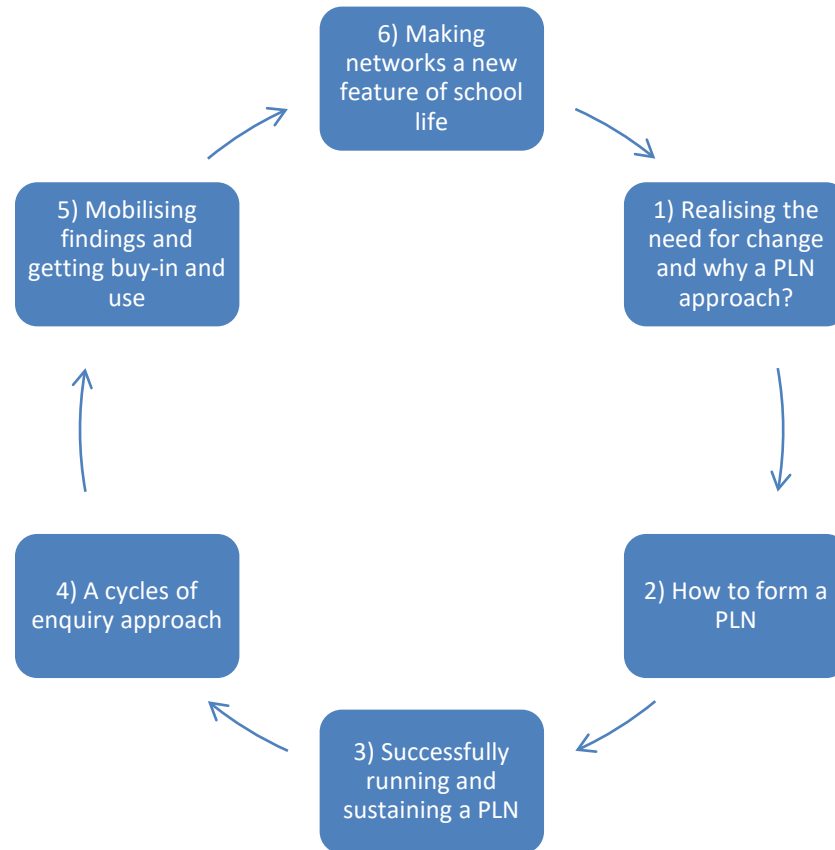


# A handbook for teachers on PLNs

- Deep reflective inquiry for actual changes in teaching and learning
- How: not self-evident
- Book aim: to help teachers with practical guidelines based on research
  
- Step by step approach
- Different phases (establishing, process and scale-up)
- main steps of inquiry and influencing factors (e.g., collaboration and leadership)
- using a large diversity of real-life examples from projects from across a range of international contexts



# Structure of the book





# If you have input for...

---

Examples of challenging issues that led to the creation of PLNs

---

Instances of PLNs involving a multitude of stakeholders

---

The processes involved in the formation of PLNs

---

Challenges and pitfalls to PLNs working effectively

# and...

---

Examples of the uses of cycles of inquiry in PLNs

---

Instances of ensuring PLN outcomes reach and are acted on in teachers' home schools

---

The processes involved in achieving sustainability

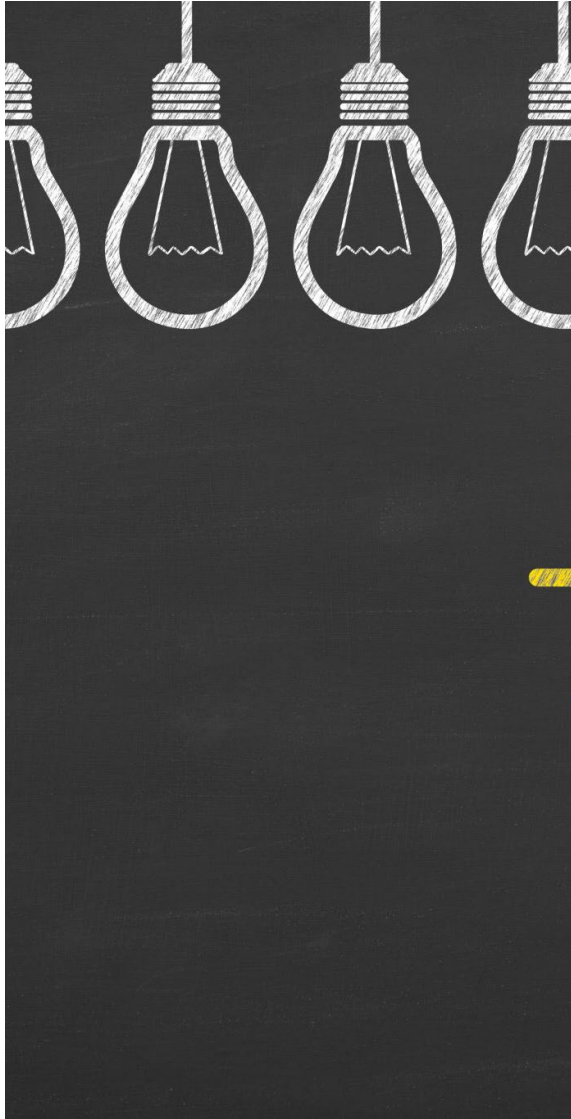
---

Other ideas...and would like to share, send us your contact info and a brief description (3-5 lines), so we can contact you in that stage of the writing process



## Network...in your groups please consider (either)

- Room 1 - Focus on student learning and impact/measuring this
- Room 2 - Ideas for the future (themes) of PLN network activities
- Please use the padlet (link in chat), add input for your category ['opmerking toevoegen']
  - 'Other ideas...' also welcome independent of room
- 10-15 min. max



## Thank you for networking with us!

---

- Please don't forget to register as a PLN-network member when becoming an ICSEI member or renewing your membership!
- Becoming a formal member will help us to serve you more effectively both in-between and at congresses.
- For questions and ideas:  
[c.l.poortman@utwente.nl](mailto:c.l.poortman@utwente.nl)  
[chris.brown@durham.ac.uk](mailto:chris.brown@durham.ac.uk)