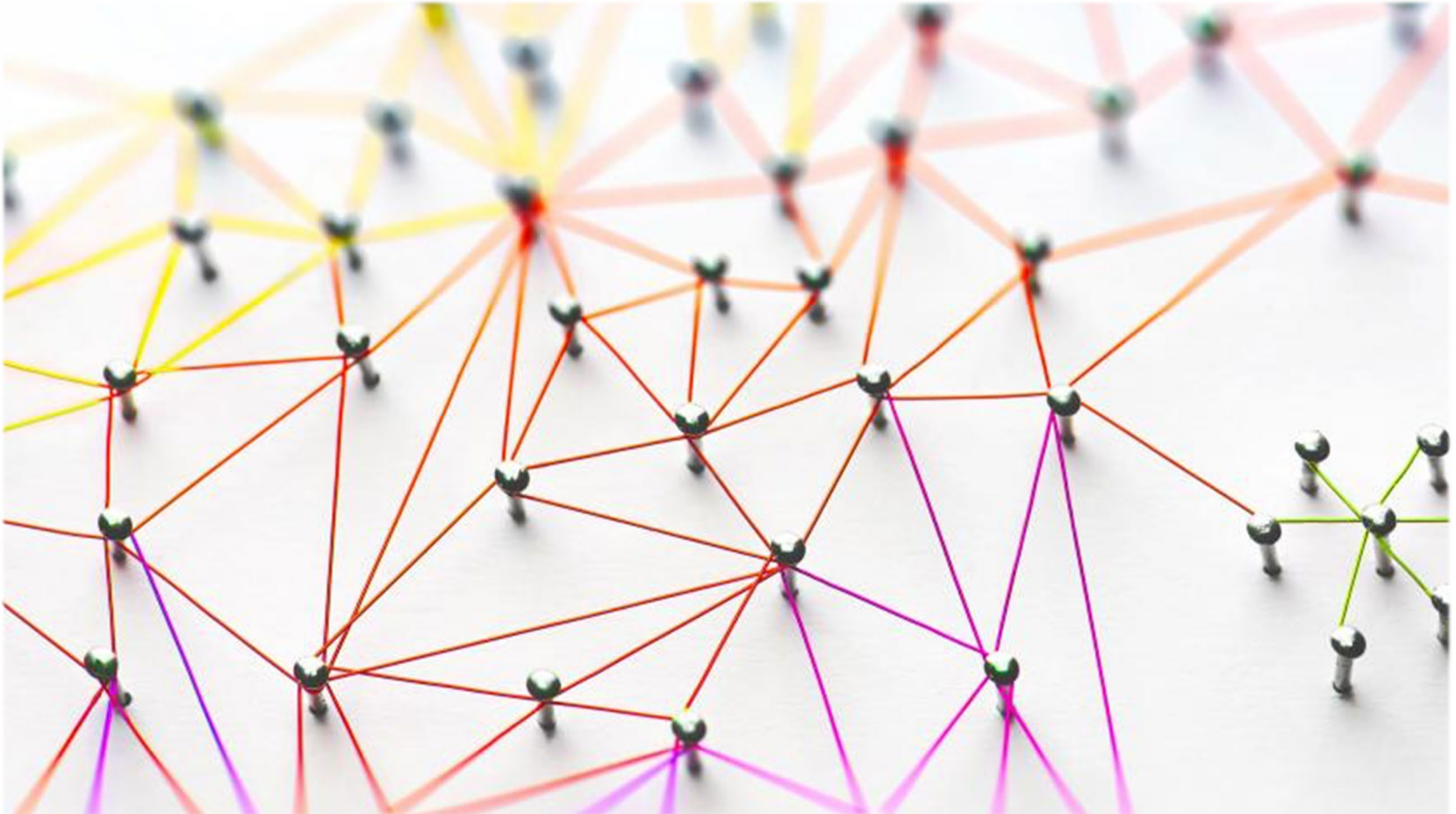


ICSEI 2022 Virtual PLN special session

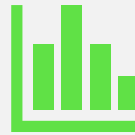
Stephen MacGregor, University of Toronto - Chris Brown, Durham University - Cindy Poortman, University of Twente



Agenda



Network aim and
2021 activities and
output



PLN research
methodology for
impact



Networking and
discussion

KEY AREAS OF FOCUS

PLN: a group of educators (e.g., teachers, school leaders, possibly in collaboration with researchers, and/or policy-makers) coming together with others outside of their everyday community of practice with the intention to engage in collaborative learning to improve outcomes for students (also equity, wellbeing)

Conceptual clarity:

e.g. types of PLN, aims of PLNs, countries and jurisdictions

Methodology:

Understanding impact and findings;
effective ways to assess impact that go beyond self-report

Understanding depth and breadth of learning:

e.g., processes of PLN and the wider participating communities

New insights into:

1. Focus
2. Leadership
3. Collaboration
4. Individual and group learning
5. Reflective Professional Inquiry
6. Boundary Crossing



What has the network achieved in 2021



KMb special issue of JPCC 2021: Schnellert & Butler; Mason & Galloway; Jesacher-Roessler; Rodway, MacGregor, Daly & Liou; Tulowitzki; MacGregor; and discussant Amanda Datnow - thank you reviewers!



Emerald PLN series book Mason & Galloway – thank you to book proposal reviewers!



INVALSI ValuEnews interview:

<https://value.invalsi.it/portale/en/magazine/motivation-and-exchange-of-best-practice-key-issues-for-the-development-of-educationists-professional-skills/>

International Education News blog post:

<https://internationalednews.com/2021/06/02/the-power-of-professional-learning-networks/>



See our newsletters highlighting the wonderful and important work of our members!

What has the network achieved in 2021?



Policy advice to NSW



PLNs at ICSEI: a big thank you to the anonymous reviewers!!



PLNs at AERA?

IF we could meet in person in San Diego

Would you be interested in getting together for drinks, dinner...?

Please let Cindy know:

c.l.poortman@utwente.nl

[between March 1-15]

Looking ahead...

- More edited books from colleagues, e.g. New Zealand
- **YOUR NAME HERE? E.g.**
 - (local) conference(s or contributions)
 - Further book series books
 - Collaborative projects, webinars...
 - Input for papers and cases
 - New elements for our key areas of focus?
 - See contact info final slide



PLN Research methodology for impact



Professional learning networks in design-based research interventions

Dr. Mei Lai, Associate Director, [Woolf Fisher Research Centre](#) and Associate Professor in the [School of Curriculum and Pedagogy](#), Faculty of Education



Research recommendations for PLNs

*Cindy Poortman (Utwente),
Chris Brown (Durham) and Kim
Schildkamp (Utwente)*

Professional learning networks in design-based research interventions

- *Dr. Mei Lai, Associate Director, [Woolf Fisher Research Centre](#) and Associate Professor in the [School of Curriculum and Pedagogy](#), Faculty of Education*

PLNs: Definition, conceptual and methodological challenges

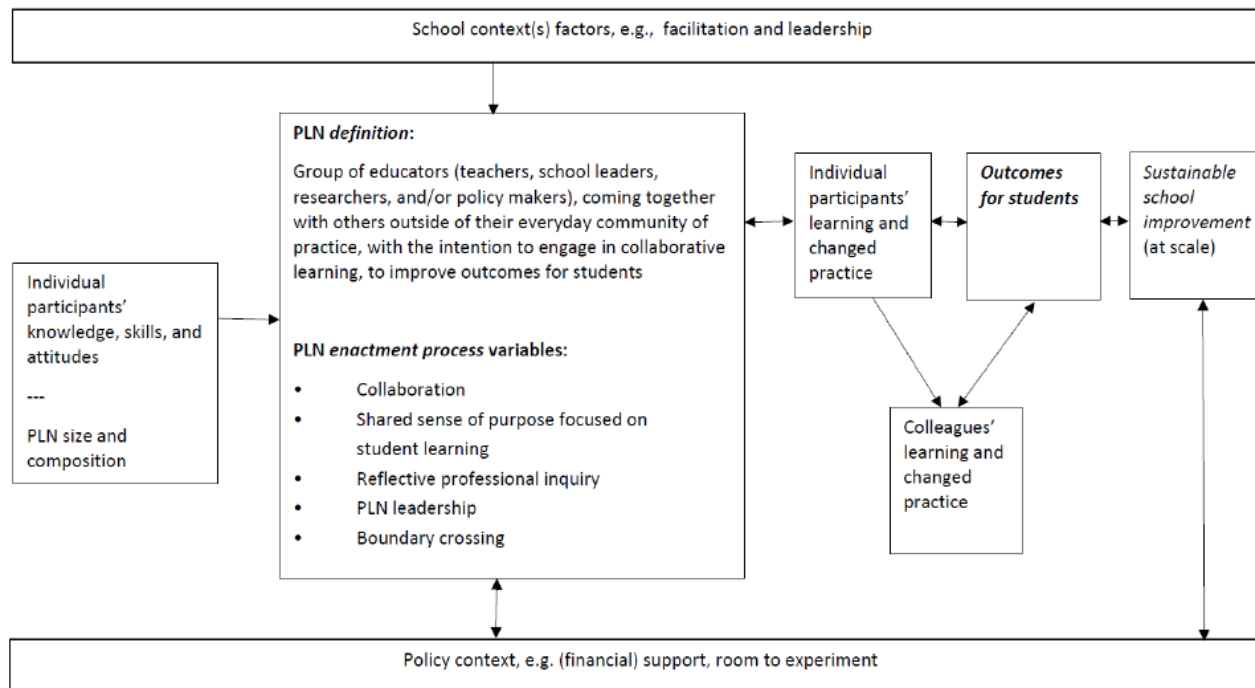
- Definition*: *a group of educators (e.g., teachers, school leaders, possibly in collaboration with researchers, and/or policy-makers) coming together with others outside of their everyday community of practice with the intention to engage in collaborative learning to improve outcomes for students (also equity, wellbeing)*
 - *Enactment variables*
 - *Influencing factors*
- Research challenges
 - Research design
 - Measurement
 - Big data?

PLNs: Definition, conceptual and methodological challenges

- Theory-of-action=> see research model
- Beyond singular, self-report methodology (more valid and reliable, less burdensome (?))
- Data mining and machine learning
 - Recording and transcribing PLN meetings
 - Text mining => reflective professional inquiry?
 - Correlation with outcomes for students
 - Challenges: ‘big’ data, but how comparable (e.g. PLGs have their own goals); technical (and social + ethical)

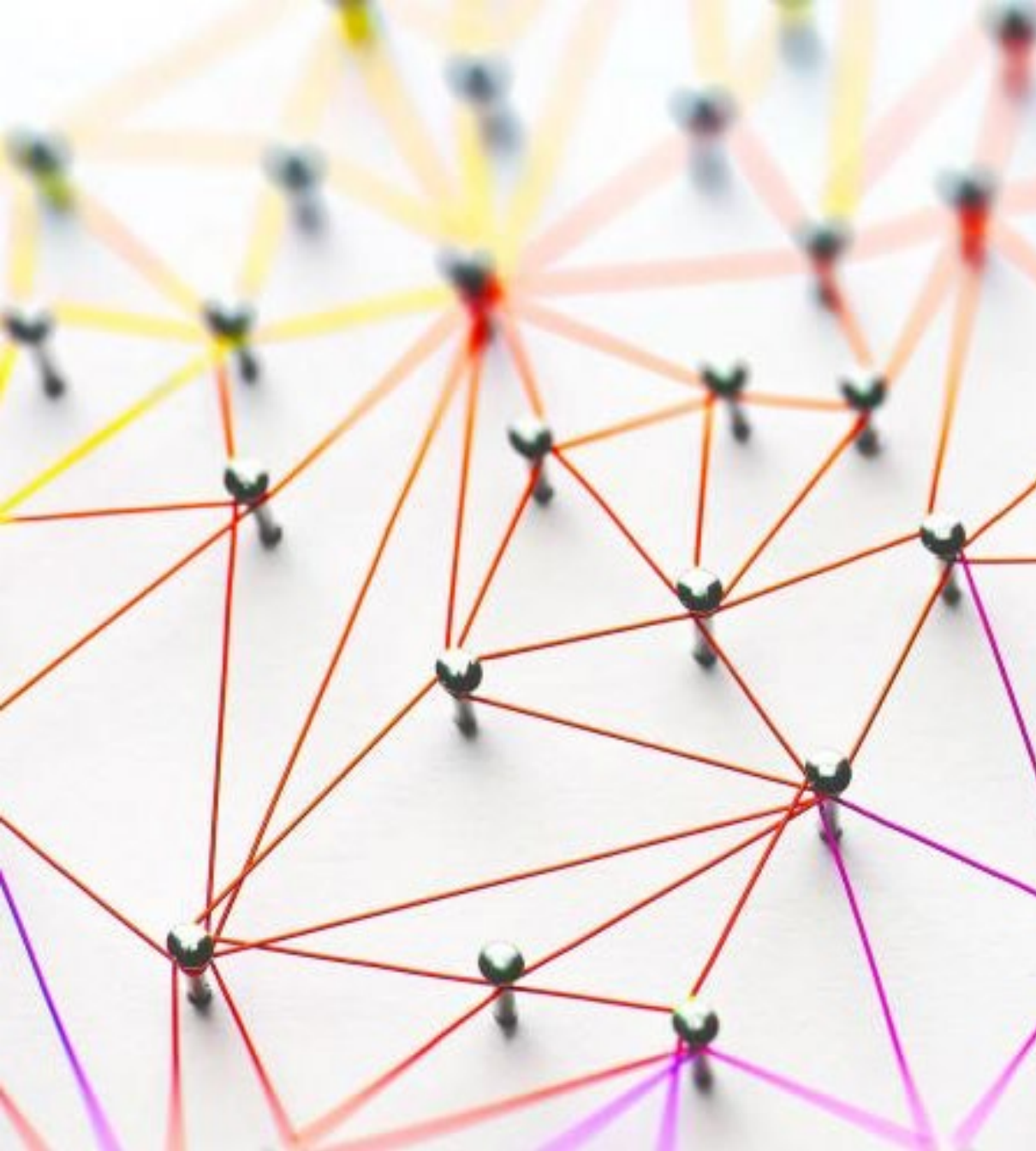
PLNs: Definition, conceptual and methodological challenges

- *Open-access paper: Poortman, C. L., Brown, C., & Schildkamp, K. (2021). Professional learning networks: a conceptual model and research opportunities. *Educational Research*, 1-18.



Discussion in groups

- Break-out rooms
- Please discuss...
 - Brief introduction of who you are
 - **Please use the padlet to let us know – see QR code or link in chat:**
 - What do you like about the ideas presented?
 - What are your concerns and questions with these ideas?
 - What insights would you like to share about methodology or in general about your PLN work, e.g.: new projects, publications, presentations.....
- **After 20 minutes, you will be invited back to the main room!**



Thank you for
networking
with us!

- Please don't forget to register as a PLN-network member when becoming an ICSEI member or renewing your membership!
- Becoming a formal member will help us to serve you more effectively both in-between and at congresses.
- For questions and ideas:
c.l.poortman@utwente.nl
- chris.brown@durham.ac.uk
- stephen.macgregor@queen.su.ca